



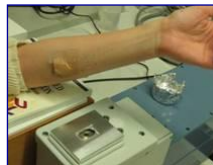
IN VIVO SKIN STUDIES BY RAMAN SPECTROSCOPY

Johanna de Sterke, André van der Pol
Peter Caspers, Rolf Wolthuis
River Diagnostics B.V.
The Netherlands



River Diagnostics - *in vivo* skin analysis

- River Diagnostics founded in 2002 as a spin off from the Erasmus University Medical Centre Rotterdam
- Model 3510 Skin Composition Analyzer in the commercial market since 2004



CE.R.I.E.S.

ESTÉE LAUDER



SHI/EIDO

proDERM

Johnson & Johnson



COLGATE-PALMOLIVE COMPANY

Kanebo
INTERNATIONAL

SSL International plc
Skin Diagnostic Division

P&G





Principles of measurement - Raman skin analysis

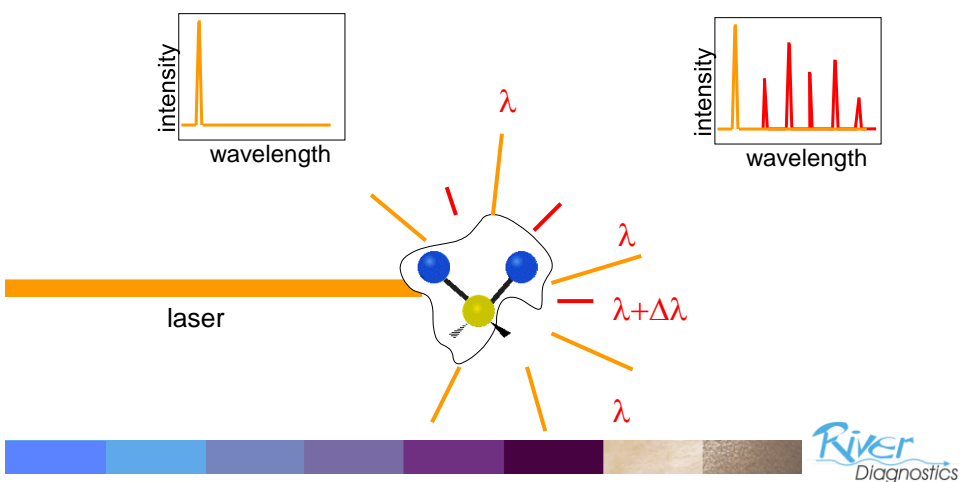
- optical, non-invasive and non-disturbing
- no biopsies
- objective
- high spatial resolution
- no dyes or labels involved
- detailed information about chemical composition



River
Diagnostics



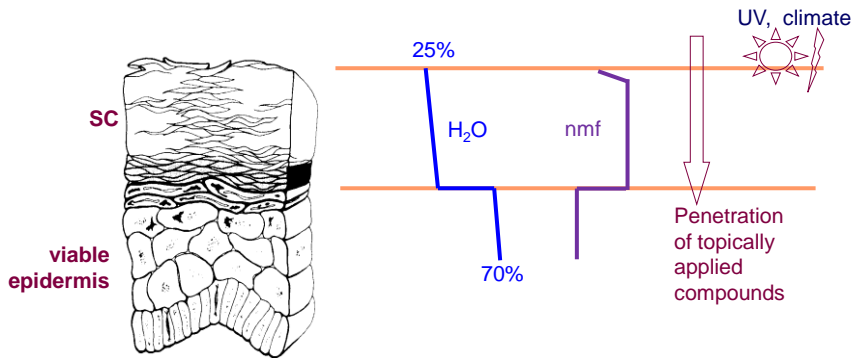
Raman spectroscopy - principle





Information in Raman spectra of skin

5

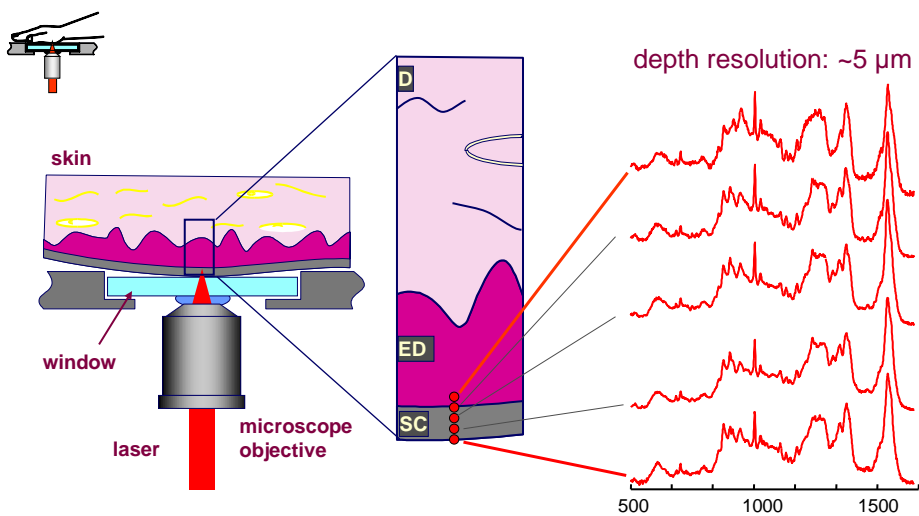


from: Rawlings et al. J. Invest. Dermatol. 103, 1994

It is all about:
Main chemical composition of the skin at different depths

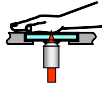


confocal Raman microspectroscopy

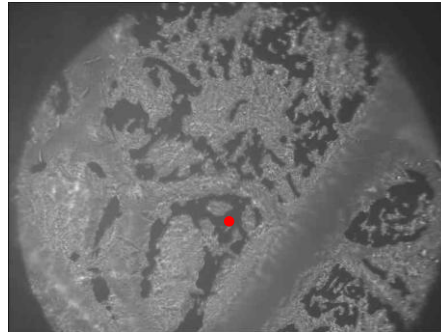




confocal Raman microspectroscopy



Visual micrograph of skin



400 μm



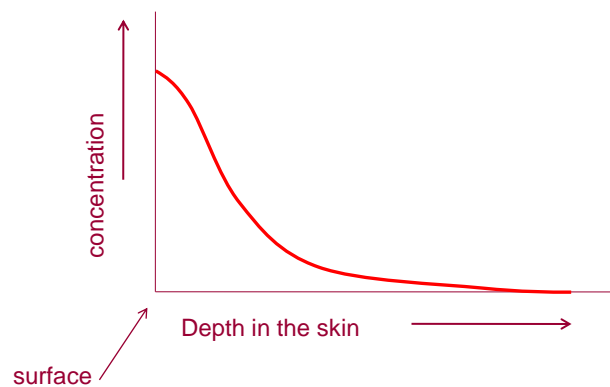
River
Diagnostics



Information in Raman spectra of skin

8

- A Raman measurement usually results in concentrations versus depth



River
Diagnostics



Information in Raman spectra of skin, examples

9

- skin characterisation
 - water, nmf, lipids, carotenoids, urea
 - typing, aging effects, ethnic effect, cultural effects
 - neutraceutical
- Penetration and penetration kinetics
 - glycerol, dmsol, lactate, ethanol, caffeine, menthol, nicotinamide, uv absorbers, oils, retinol, carotenes
 - formulation optimization
 - transdermal drug delivery, various pain relief agents
 - Toxicological: pyrene, toluene, butoxyethanol
- metabolic processes
 - hydrolysis of esters
- effects of products
 - moisturization
 - pH modulation
- effects of environment / skin treatment
 - humidity, season, climate, solar exposure
 - bathing, washing
- medical (diseased/disfunctional skin)
 - Atopic dermatitis



River
Diagnostics



Applications

10

- Water concentration measurement
- Skin characterization
- Penetration of active



River
Diagnostics



applications – effects of moisturizers

In 2006, a large study was published by PG researchers:

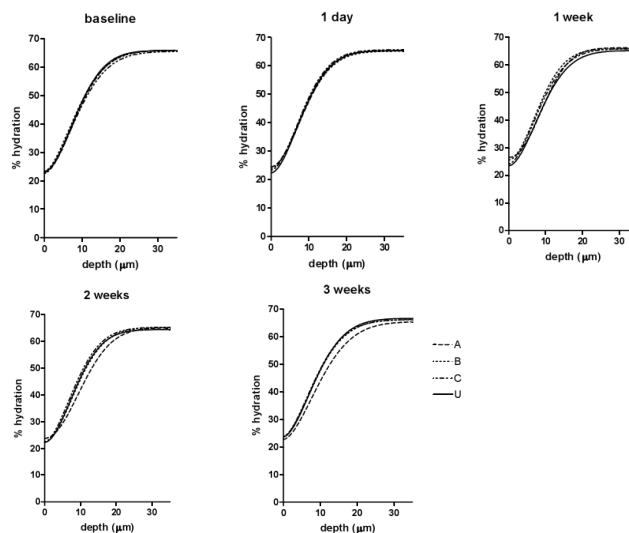
Sieg A, Crowther J, Blenkinsop P, Marcott C, Matts PJ. Confocal Raman Microspectroscopy – Measuring the effects of topical moisturizers on stratum corneum water gradient in vivo. Proc. of SPIE Vol.6093 60930N, 2006.



River
Diagnostics



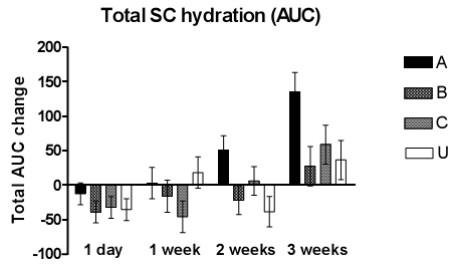
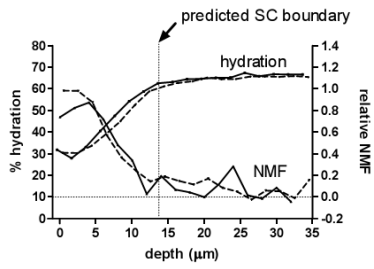
applications – effects of moisturizers



River
Diagnostics

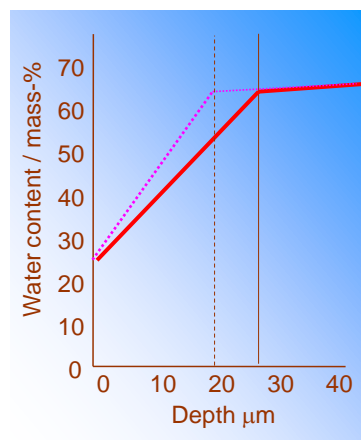
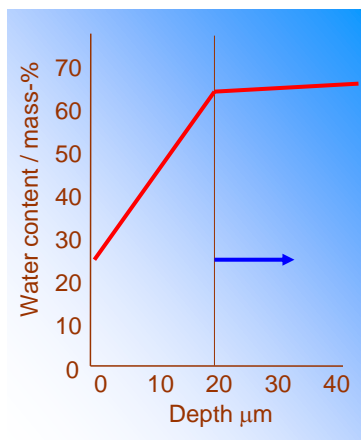


applications – effects of moisturizers



skin hydration: swelling

14





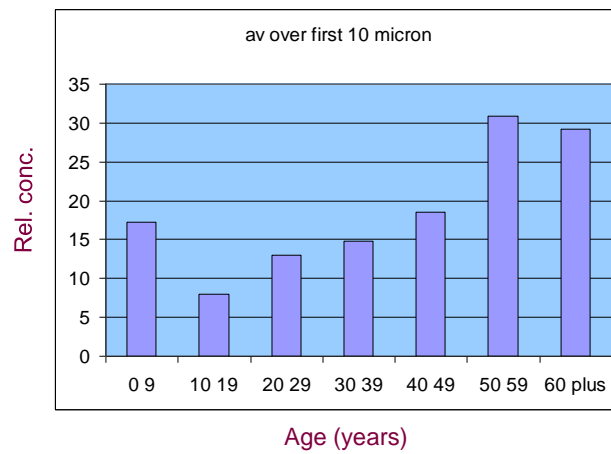
Applications

- Water concentration measurement
- Skin characterization
- Penetration of active



applications – characterization of aging

urea





Applications

17

- Water concentration measurement
- Skin characterization
- Penetration of active

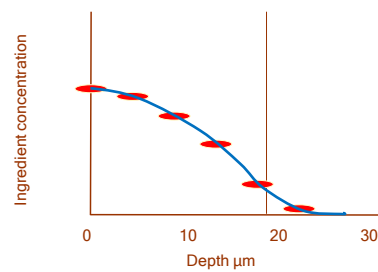
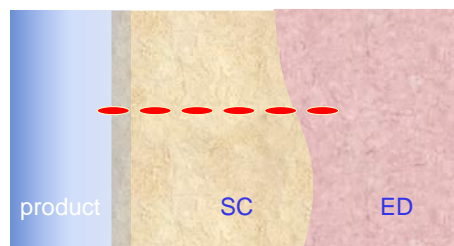


River
Diagnostics



How to extract practical information, concentration profiles

18

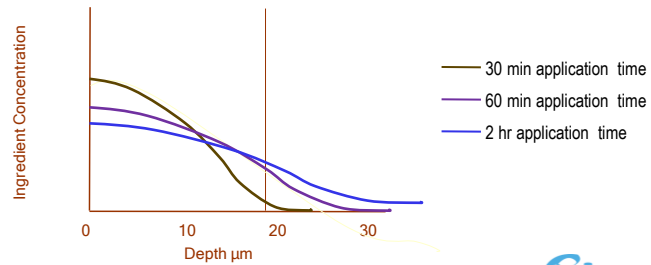


River
Diagnostics



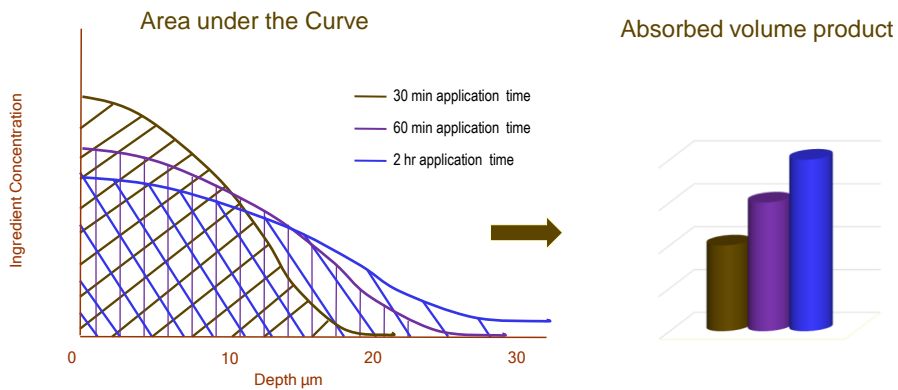
How to extract practical information, kinetics of diffusion

19



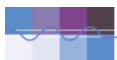
How to extract practical information, Absorbed volume of product

20



Ingredient Concentration in mmol/gr keratin → Absorbed amount in $\mu\text{g}/\text{cm}^2$





Pudney et al., Applied Spectroscopy 61(8): 2007

An *In Vivo* Confocal Raman Study of the Delivery of *Trans*-Retinol to the Skin

PAUL D. A. PUDNEY,* MICKAËL MÉLOT, PETER J. CASPERS, ANDRE VAN DER POL, and GERWIN J. PUPPELS

Measurement Science Unit, Unilever R&D, Colworth Science Park, Sharnbrook, Bedford, MK44 1LQ (P.D.A.P., M.M.); and River Diagnostics B.V., Rotterdam, The Netherlands (P.J.C., A.v.D.P., G.J.P.)

- **Solution 1:** 70 % ethanol, 30 % PG and 0.3 % *trans*-retinol
- **Solution 2:** 99.7 % MYRITOL®318 and 0.3 % *trans*-retinol
- monitor penetration for 0-6 hrs after application



River
Diagnostics

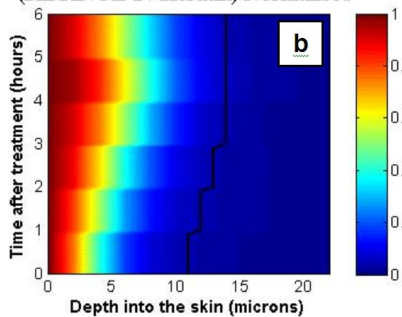


Pudney et al., Applied Spectroscopy 61(8): 2007

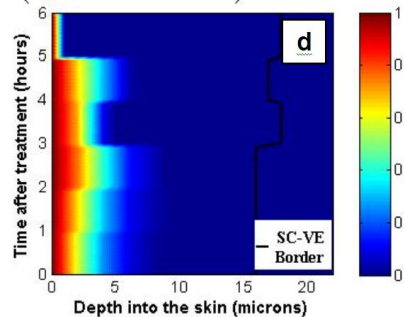
in PG/EtOH

in MYRITOL®318

(RETINOL 1 / Keratin) Normalised



(RETINOL 2 / Keratin) Normalised



River
Diagnostics



**Thank you for
your attention**